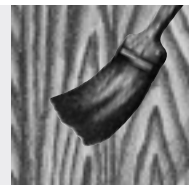


AGLAIA AQUASOL WOOD GLAZE

Water based, solvent-free natural resin oil wood glaze for a silky finish, for both indoor and outdoor use. Produces a non-swelling, diffusible, weather-resistant glaze finish. Available in 17 color tones. Exclusively made from natural raw materials.



Ranges of Application:

AGLAIA AQUASOL WOOD GLAZE is ideal for weathered wood such as formwork, log cabins, framework and size-consistent building elements such as wooden windows. Indoors also for furniture and toys. Also suitable for rooms with a high humidity. Abrasion-resistant and non-swelling regarding water when dried. Available in 14 non-fading colors for outside use and additionally clear, glaze white (03) and gentian (18) for inside use only (see Color Chart).

Processing:

Thoroughly stir up AGLAIA AQUASOL WOOD GLAZE before use and apply with a long-bristle flat brush in a thin coat in direction of grain. Recommendation: AGLAIA AQUASOL FLAT PAINTBRUSH. Adding 5 to 8 % water will improve the leveling; for absorbent, rough wood, use 10 to 15 % water. A brisk, sparing, lap-free application will ensure best results. Treat boards and planks one by one. Rough wood must first be primed with AGLAIA AQUASOL PRIMER and fine-sanded (grit 240). One base and one top coat each, with a drying time of at least 16 hours inbetween. Apply another intermediate coat to size-consistent components such as windows prior to installation. For spraying (low pressure method), thin with up to 20 % water and, if required, level out with brush. As this is not a special spray glaze, make samples first.

Technical Features:

AGLAIA AQUASOL WOOD GLAZE produces an elastic, diffusible, silky glaze finish that is non-swelling regarding water. No tendency to flake off even when severely weathered. Therefore, particularly maintenance-friendly. Pigmenting through UV-resistant, micro-fine mineral pigment powders for thin layers and economic applications. Binding agent is a fine emulsion of plant oils and dammar resin in water. Contrary to other conventional water lacquers, free of synthetic preservatives, biocides, solvents, artificial resins and softeners. Water thinnable and easy to apply. Virtually non-yellowing and only slightly enhancing grain and pattern when used on light colored woods.

The diffusion capacity of the wood remains unaffected. Absolutely recommended from a biological and ecological building point of view for creating an agreeable room climate. Perspiration and spittle-resistant according to DIN 53 160 and EN 71.

Contains no biocides. Therefore, ensure the use of non-blueing woods and constructive wood protection.

Physical/Technical Characteristics:

Density: 1.0-1.1 g/cm³
 pH Value: 8.5
 Efflux time (4 mm DIN / 20°C): 12-18 secs

Color tones:

For indoors and outdoors: chalk white (02), pearl grey (04), driftwood (05), pine (06), light oak (07), teak (09), walnut (11), jacaranda (12), ebony (13), mahogany (16), may green (20), corn yellow (21), red pepper (22), sky blue (23). See Color Chart.

For indoors only: clear (01), glaze white (03), gentian (18).

Colors can be mixed with each other according to taste. When working outside, please only use color tones marked „for outdoors“. Because of possible incompatibilities, no pigmenting possible using e.g. AGLAIA PIGMENTS !

Drying:

Under normal conditions, touch dry after 6 hours, safe to coat after 16 to 24 hours. Minimum application temperature: approx. 14°C.

Yield:

On planed conifer wood: approx. 0.08 l per coat and m³.
 On rough wood: considerably more.

Available Sizes:

0.25 l, 0.75 l, 3 l and 10 l.

Cleaning:

Clean appliances, tools and clothes with common laundry soap immediately after use. Soap and rinse well. Repeat until bristles are absolutely clean.

Storage:

Lasts at least 12 months when stored cool and free of frost in the airtight sealed original container. Once opened, re-seal container airtight and use up as soon as possible. Thin only quantity needed with tap water and use up soon.

AGLAIA AQUASOL WOOD GLAZE

Composition:

Full declaration according to the quality standards of the Association for Natural Colors (AGN):

[1]: Tap water, Dehydrated castor (stand) oil;
[2]: Safflower (stand) oil, Dammar resin, Wood (stand) oil, Refined linseed oil, Shellac soap; [3]: Borax, Methylcellulose, Xanthan, Milk casein, Linseed oil soap, Diatomaceous earth, Lavender oil, Thyme oil, Co/Mn/Zr-drying agents.

AGLAIA AQUASOL WOOD GLAZE toned plus pigments:

[2]: Titanium dioxide, Chalk, Iron oxide black, Umber, Terra di Siena, Iron oxide brown, Iron oxide red, Ultramarine blue, Chrome oxide green, Iron oxide yellow, Nickel- titanium yellow, Cobalt blue.

Explanation of Symbols:

[1] ... Raw material rate in product > 10%
[2] ... Raw material rate in product 1-10%
[3] ... Raw material rate in product < 1%

Surface and Pretreatment:

General Requirements:

Use only on dry and clean wood. Maximum wood moisture: 15 % for conifer wood, 12 % for hardwood. Carefully remove any grease, wax or resin remainders with AGLAIA BALSAM LACQUER THINNER. When hot, resin-rich wood tends to exude resin and can only tolerate coating to a limited extent. Sand rough woods. Absorbent wood with a good grip is ideal. Completely sand off or strip flaking old coatings down to the bare wood. Carefully sand pretreated absorbent wood and make samples. Grey or spongy wood must be sanded down to the level of the pitting. Also make samples before applying to wood containing a substantial amount of tannic acid, oils or resins in particular oak or tropical woods because of possible discoloration and substances that may delay the drying process. Water-swellaable woods (e.g. beech) may reveal fine cracks. Pretesting is, therefore, recommended. The interior of closets, drawers and chests should be primed using AGLAIA WOOD IMPREGNATION PRIMER only.

Coating sequence:

Pretreat raw wood by applying AGLAIA AQUASOL PRIMER to saturation, but excess-free; carefully sand and glaze after a minimum drying period of 16 hours. Also remove any protruding wood fibers after priming. For outdoors, at least 3 coatings are required, including priming. For severely weathered south or west facades and for size-consistent components, another wood glaze layer is required. Prime size-consistent wood components prior to installation, then pretreat once with AGLAIA AQUASOL WOOD GLAZE.

Intermediate and finish coat after installation. Treat wood sidings also once or twice on the backside and ensure ventilation at rear. For preventive wood protection of supporting structures according to DIN 68 800, AGLAIA BORIC SALT IMPREGNATION is the right product for indoors. Further treatment with AGLAIA WOOD IMPREGNATION PRIMER.

Wood based materials and chipboards contain water-soluble, bleeding substances and some are treated to become water-repellent. Therefore, make samples!

Maintenance and Care:

Wood outdoors requires maintenance. When severely weathered, a light sanding and coating is needed after 1½ to 3 years. Simple building measures (e.g. roof projections, rounded edges, slight tilting of lower window frames) and careful selection of wood (resistance classifications according to EN 350-2) extend the lifespan of each coat significantly. Woods that are not weather-resistant or are horizontally weathered, mechanically strained, in contact with the ground are not suitable. For more information refer to DIN 68 800 and BFS Information Sheet No. 18 (Federal Committee for Paints and the Protection of Property, membership corporation).

Safety Instructions and Disposal:

► Hazard Class: not subject to identification requirements under Toxic Chemicals Ordinance/ EU Directive.

Cloths soaked in drying plant oils generate a risk of self-ignition. Therefore, always store in closed, airtight metal containers. Chemically sensitive and environmentally ill persons, please pay attention to the full declaration. Keep out of reach of children. Do not dispose of organic coatings into the sewage system. Disposal of product remainders according to legal regulations. Disposal of empty containers through resource collection points.

► Waste Code: Product and Product Reminders (European Waste Code): 080199 (Coatings).

It is our objective to provide, through this technical information, advice based on our skills and practical experience. Any instructions given are non-binding and do not release the user from his or her liability to check for product suitability and application methods him/herself with regard to the surface used. Technical modifications may result from product development. Upon publication of a revised or new version, these instructions will automatically lose their validity. The details contained in the EU Safety Data Sheets in their current form dictate liability for classification in terms of the Hazardous Substances Regulation, disposal etc.