



The  
**Hemp Block**  
COMPANY  
Building with Nature

## Hempcrete Blocks & Cladding

A very simple wall build up which can be externally finished with timber or masonry cladding. The depth of stud and the thickness of block can be varied to suit the brief. This build up combines the speed of timber frame construction with the solid feel of masonry hempcrete blocks.

External cladding (including masonry cladding).

Cladding batten and ventilated gap.

Breather membrane.

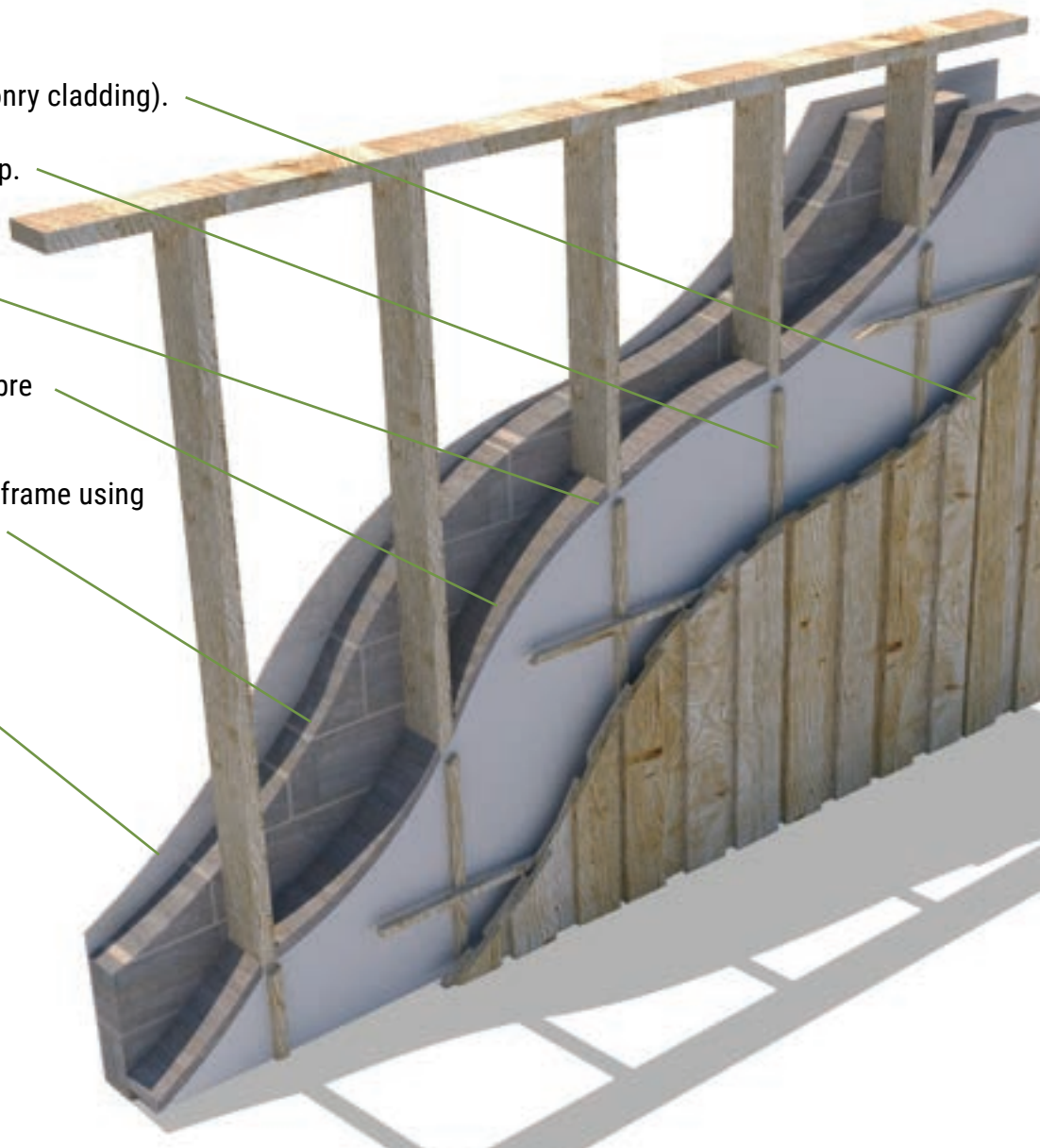
150mm Stud frame with full fill insulation-Sprayed hempcrete or hemp batt insulation or woodfibre batt insulation or similar.

200mm Hempcrete blocks tied to frame using stainless steel timber frame ties.

Lime or clay plaster.

At a glance

- **U=0.15 @ 350mm**
- **U=0.12 @ 450mm**



Building with Nature

Email [info@hempblocks.co.uk](mailto:info@hempblocks.co.uk)

Tel: 01923 263944





The  
**Hemp Block**  
COMPANY  
Building with Nature

## Hempcrete Block and feature oak or Glu-Lam frame

This is an extremely quick method of construction owing to its simple detailing. Portal timber frames are prefabricated off-site and erected very quickly, installation of the large hempcrete blocks is also very quick due to their sheer size. An insulating mortar is used to avoid cold bridges through the wall.

External Lime render (or vented gap and cladding).

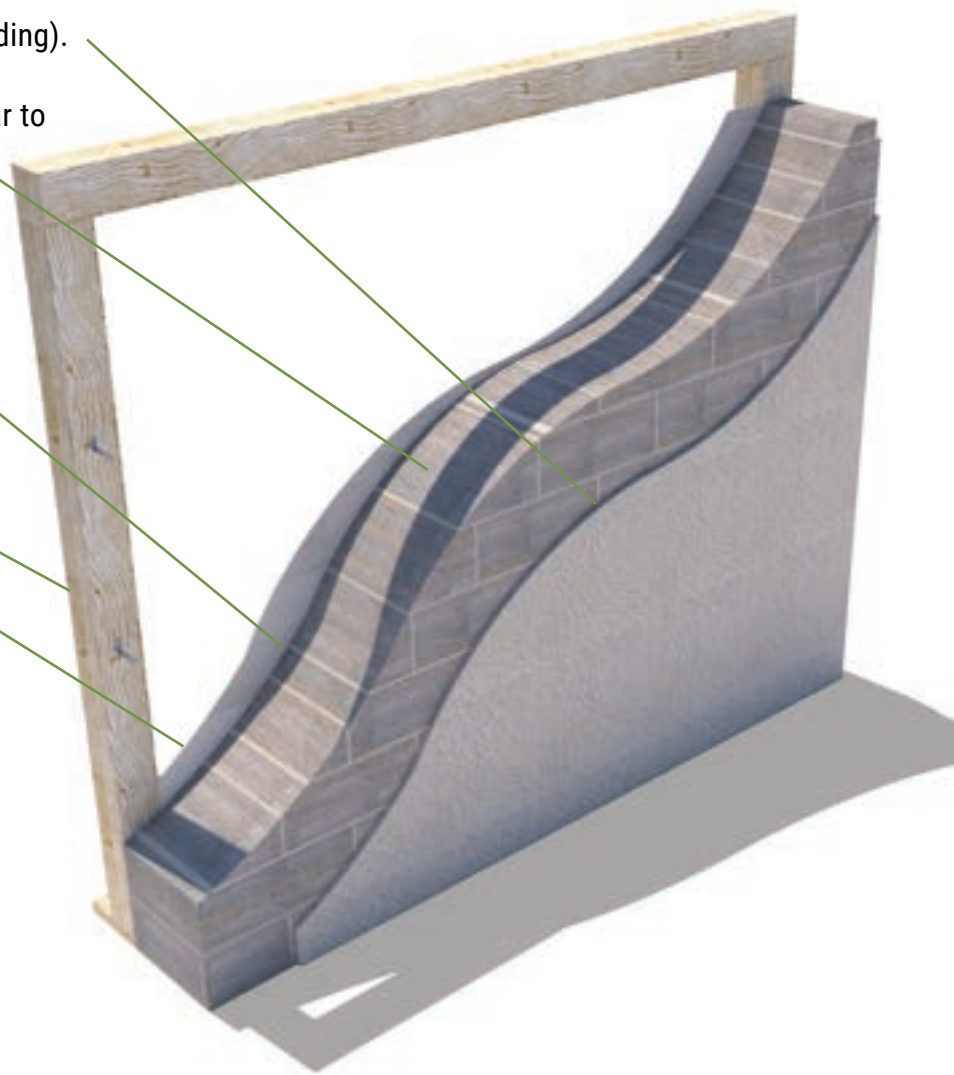
Hempcrete blocks laid using insulating mortar to eliminate cold bridging. Blocks tied to timber frame using stainless steel wall ties.

Blocks set 20mm off frame to leave a shadow gap once plastered

Feature oak, Glu-lam or other timber frame on show internally.

Internal clay or lime plaster.

- U= 0.19 @360mm thick
- U= 0.18 @400mm thick



Building with Nature

Email [info@hempblocks.co.uk](mailto:info@hempblocks.co.uk)

Tel: 01923 263944





The  
**Hemp Block**  
COMPANY  
Building with Nature

## Hemp block and flexible insulation

Hempcrete block internal and external leaf with the stud zone filled with flexible insulation such as hemp fibre or wood fibre batts.

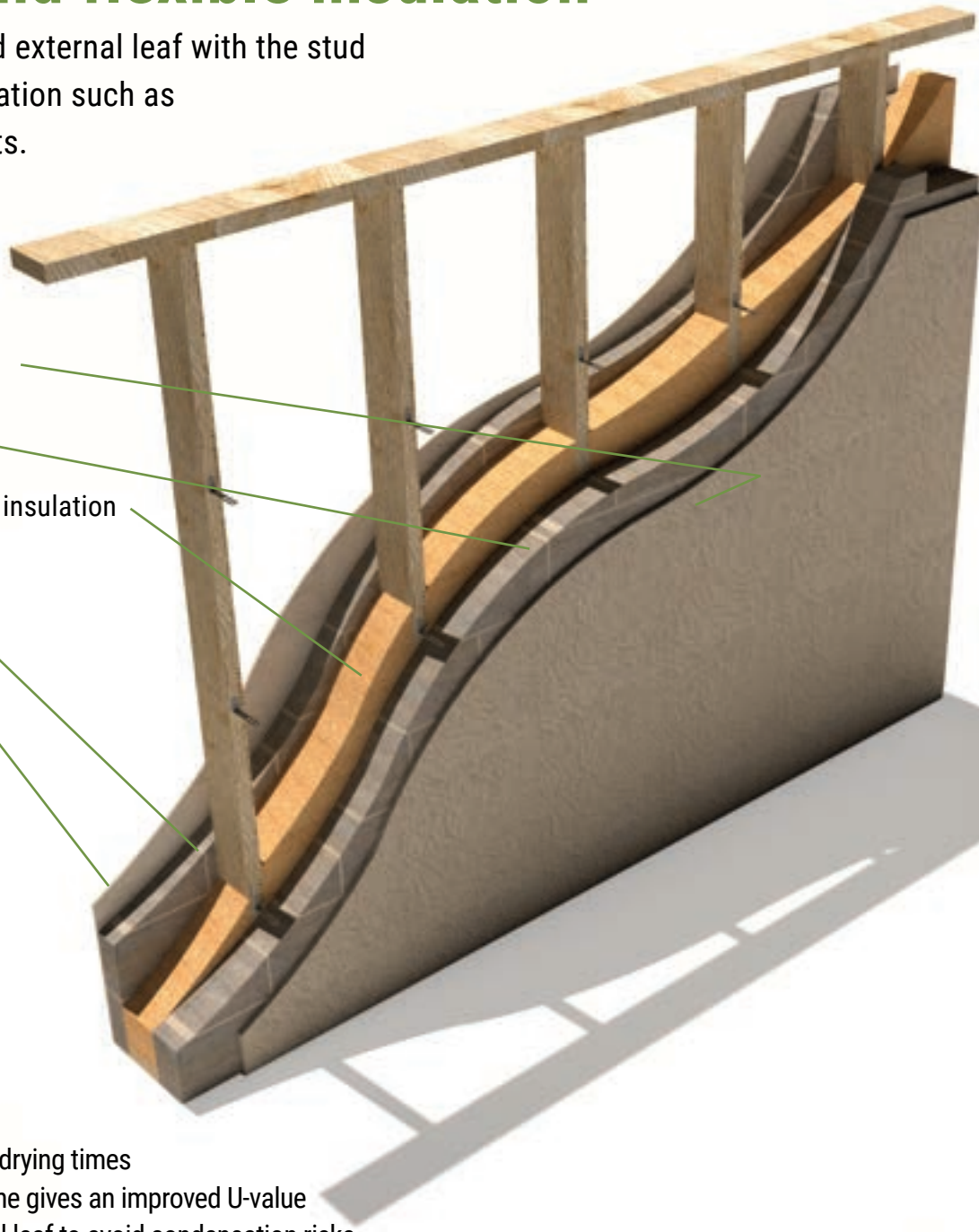
External lime render (or cladding)

External Hempcrete block

Frame zone full filled with natural insulation

Internal hempcrete block

Internal lime or clay plaster



### At a glance

- **U=0.18 @300mm thick**
- **U=0.15 @350mm thick**
- **U=0.11 @450mm thick**
- Create a Hempcrete wall with no drying times
- Flexible insulation within stud zone gives an improved U-value
- Use thicker blocks on the external leaf to avoid condensation risks
- Services chased into blocks or run in the frame zone

Building with Nature

Email [info@hempblocks.co.uk](mailto:info@hempblocks.co.uk)

Tel: 01923 263944





The  
**Hemp Block**  
COMPANY  
Building with Nature

## Hempcrete Block internal solid wall insulation

Hempcrete blocks are a quick and easy solution for solid wall insulation. The blocks can be laid to either follow the contours of existing walls or straighten them up. For historic properties the blocks can easily be shaped with a rasp float to curve into timbers or create rounded edges.

The wall ties are fixed to the existing wall with the appropriate screw and plug and stick out into the mortar joint. The blocks can be set off the wall and the gap between the wall and the blocks can be filled with dry loose hempcrete insulation. Services can be chased into the blocks.

Existing solid wall

Hempcrete blocks tied to masonry wall using stainless steel wall ties.

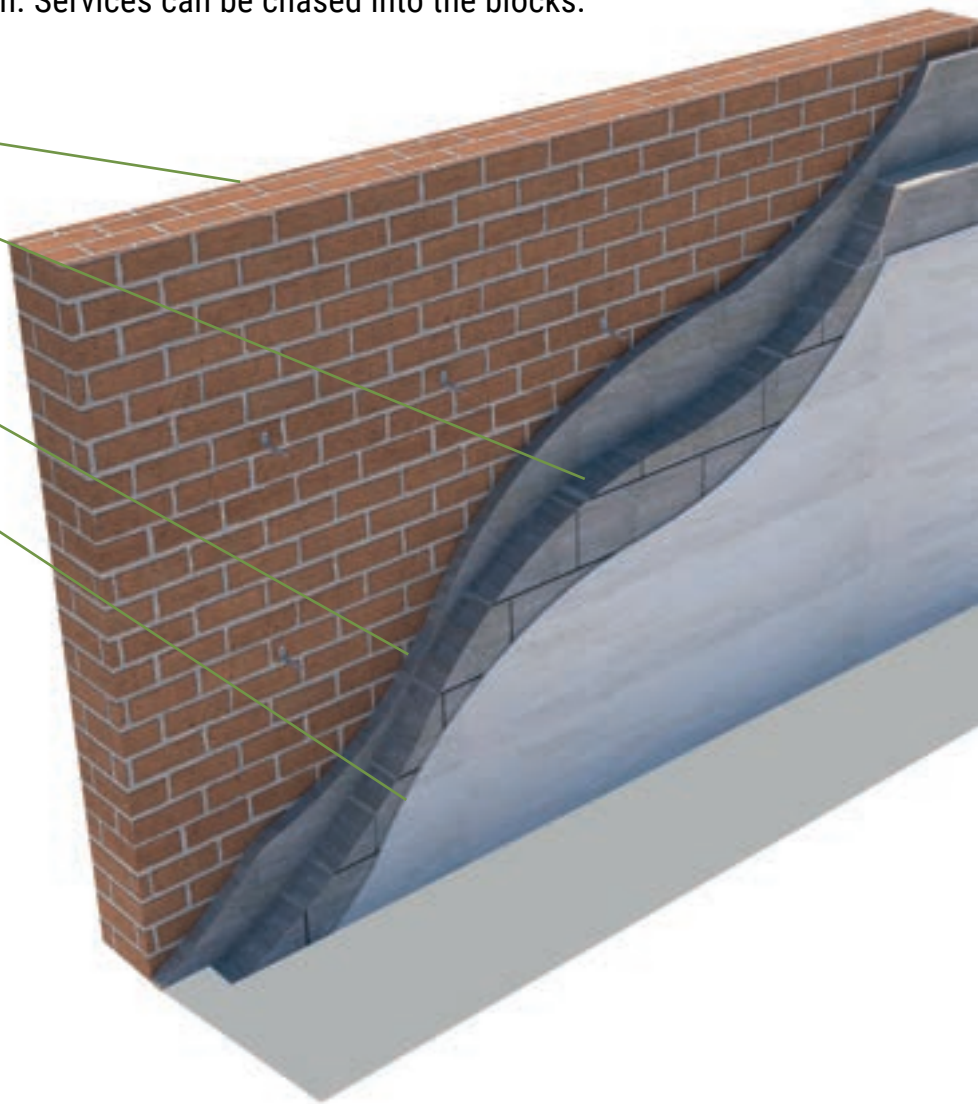
Infill any gaps with loose Hempcrete

Internal lime or clay plaster

The below U-values are of the blocks only and don't include any insulation value of the existing wall itself.

At a glance

- **U=0.875 @80mm**
- **U=0.58 @120mm**
- **U=0.35 @200mm**
- **U=0.28 @250mm**
- **U=0.23 @300mm**
- **U=0.19 @360mm**



Building with Nature

Email [info@hempblocks.co.uk](mailto:info@hempblocks.co.uk)

Tel: 01923 263944





The  
**Hemp Block**  
COMPANY  
Building with Nature

## Hempcrete Block with cast or sprayed hempcrete

Hempcrete blocks are an obvious choice to use with sprayed or wet cast hempcrete. Using them on the internal side of the wall means the inside work can continue in the dry whilst the sprayed or wet cast hempcrete is applied externally. Drying times are also dramatically reduced compared to cast or sprayed hempcrete alone. Services can be chased into the blocks or run within the frame studs.

External Lime render (or vented gap and cladding).

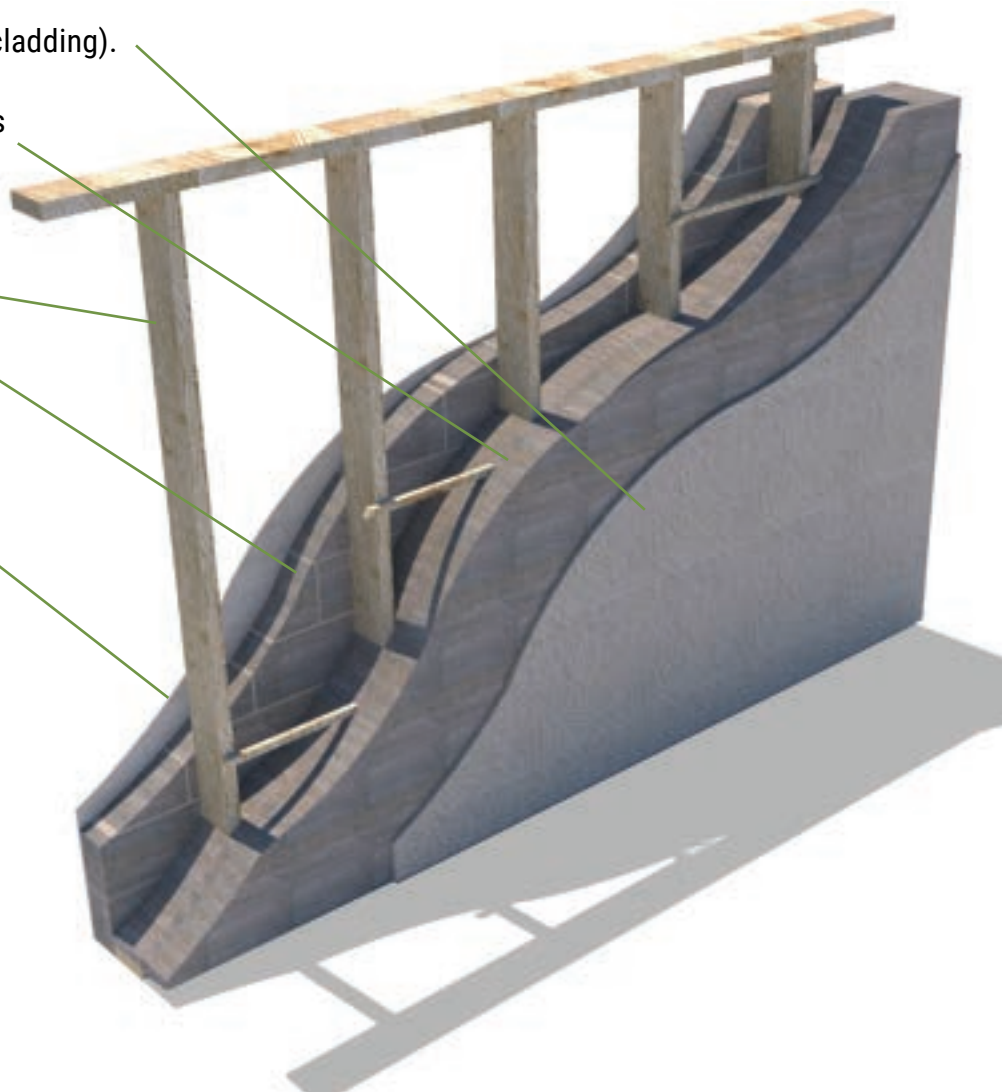
Sprayed or cast hempcrete between studs and covering studs on the external side.

Timber Frame

Hempcrete blocks tied to frame with stainless steel timber frame ties.

Internal clay or lime plaster.

- U= 0.18 @350mm thick
- U= 0.14 @450mm thick



Building with Nature

Email [info@hempblocks.co.uk](mailto:info@hempblocks.co.uk)

Tel: 01923 263944





The  
**Hemp Block**  
COMPANY  
Building with Nature

## Hempcrete Block and external woodfibre board

Coupling hempcrete blocks with wood fibre boards improves the U-value to the point where Passive Haus standards are achievable. The benefit Hempcrete blocks bring to this kind of construction is the solid feeling that masonry provides, thermal mass and the ability to passively regulate internal humidity. Services can be chased into the blocks or run within the frame studs.

External Lime render (or vented gap and cladding).

External tongue and grooved woodfibre board

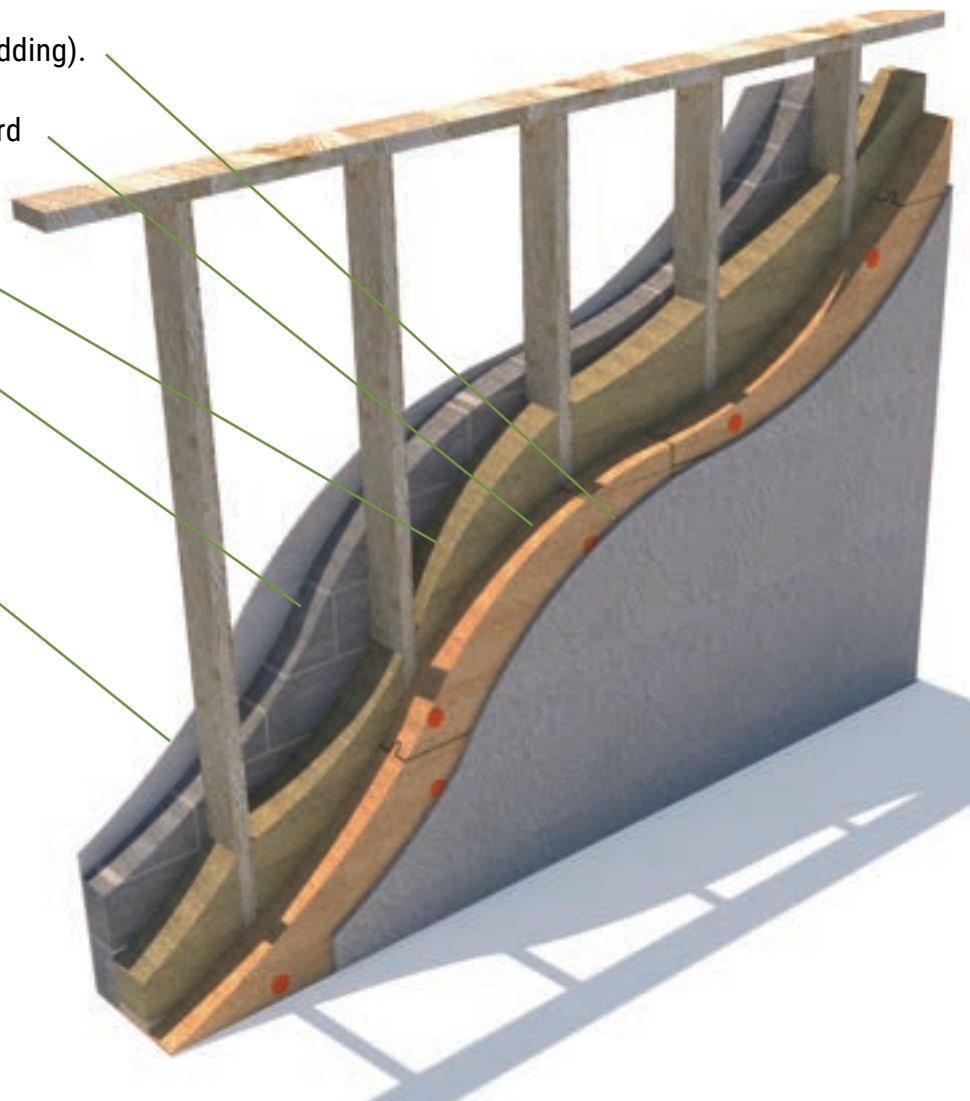
Timber frame with full fill  
hemp batt or similar insulation

Hempcrete blocks tied to frame  
with stainless steel timber frame ties.

Internal clay or lime plaster.

At a glance

- **U= 0.17 @260mm thick**
- **U= 0.13 @350mm thick**
- **U= 0.10 @450mm thick**



Building with Nature

Email [info@hempblocks.co.uk](mailto:info@hempblocks.co.uk)

Tel: 01923 263944





The  
**Hemp Block**  
COMPANY  
Building with Nature

## Hempcrete Block and external woodfibre board

Coupling hempcrete blocks with wood fibre boards improves the U-value to the point where Passive Haus standards are achievable. The benefit Hempcrete blocks bring to this kind of construction is the solid feeling that masonry provides, thermal mass and the ability to passively regulate internal humidity. Services can be chased into the blocks or run within the frame studs.

External Lime render (or vented gap and cladding).

External tongue and grooved woodfibre board

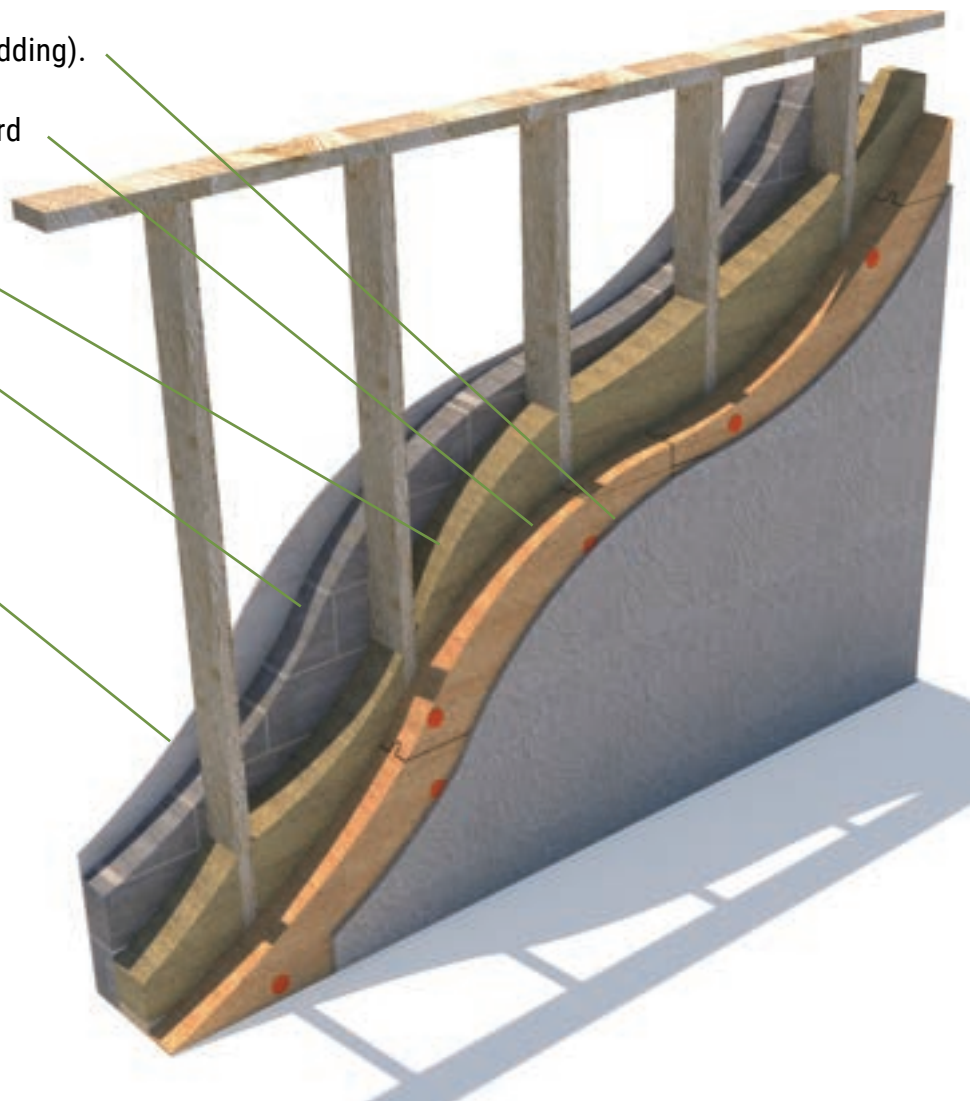
Timber frame with full fill  
hemp batt or similar insulation

Hempcrete blocks tied to frame  
with stainless steel timber frame ties.

Internal clay or lime plaster.

At a glance

- **U= 0.17 @260mm thick**
- **U= 0.13 @350mm thick**
- **U= 0.10 @450mm thick**



Building with Nature

Email [info@hempblocks.co.uk](mailto:info@hempblocks.co.uk)

Tel: 01923 263944

